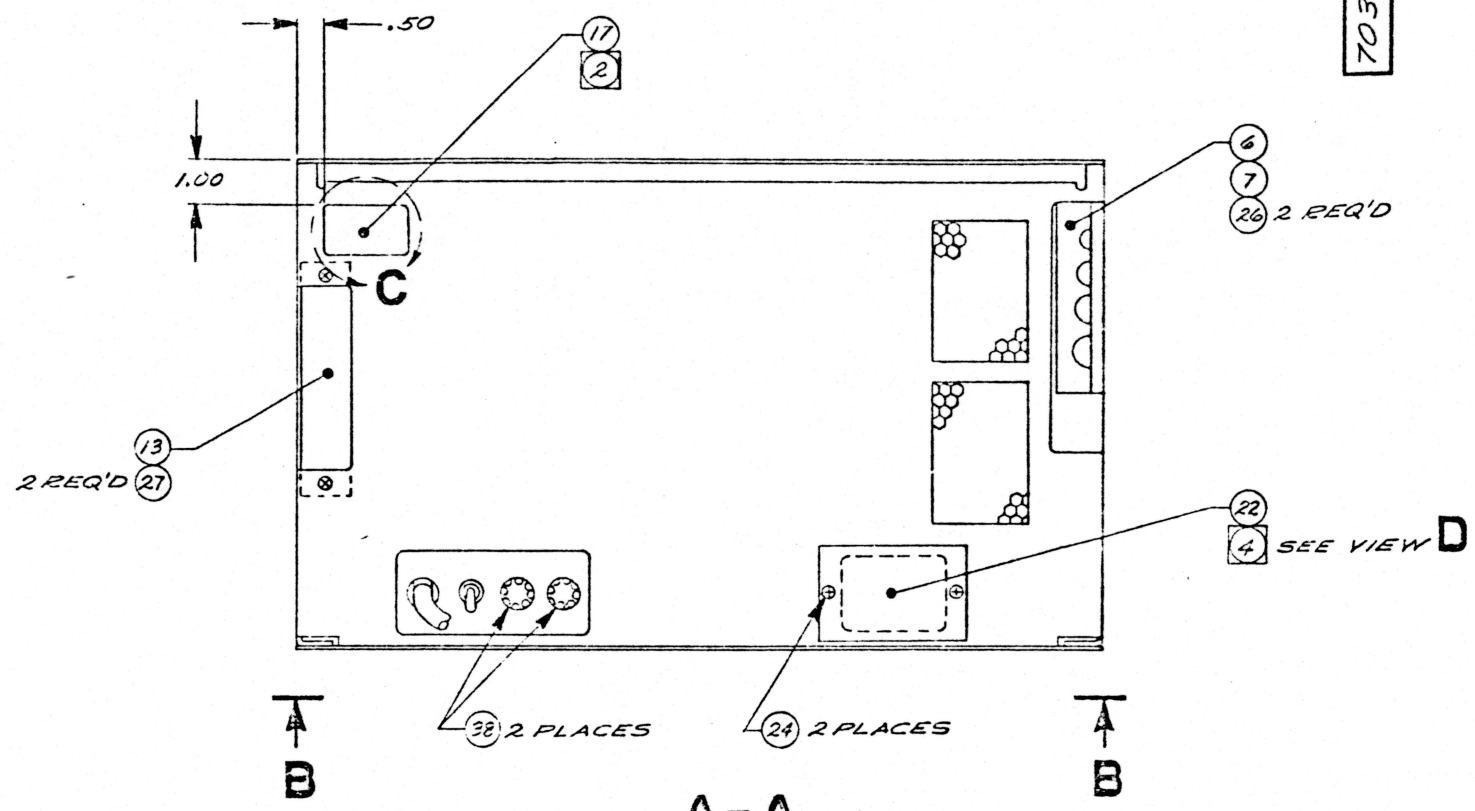


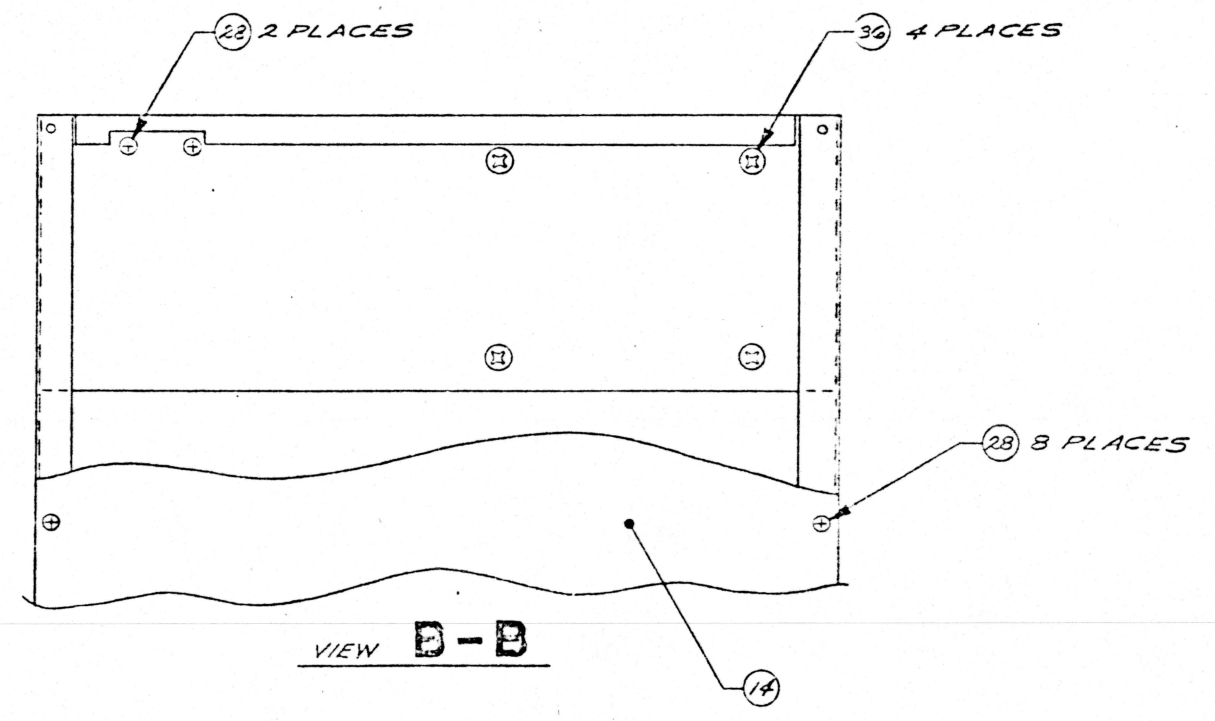
The information herein is the property of Plessey Memories, Inc. It is to be used only for the specific purpose for which it was prepared. It is not to be distributed, copied, or reproduced in any form without the written consent of Plessey Memories, Inc.

| ZONE | | LTR | | REVISIONS | DATE | APPROVED |
|------|--|-----|--|-------------|------|----------|
| | | | | DESCRIPTION | | |
| | | | | SEE SHEET 1 | | |

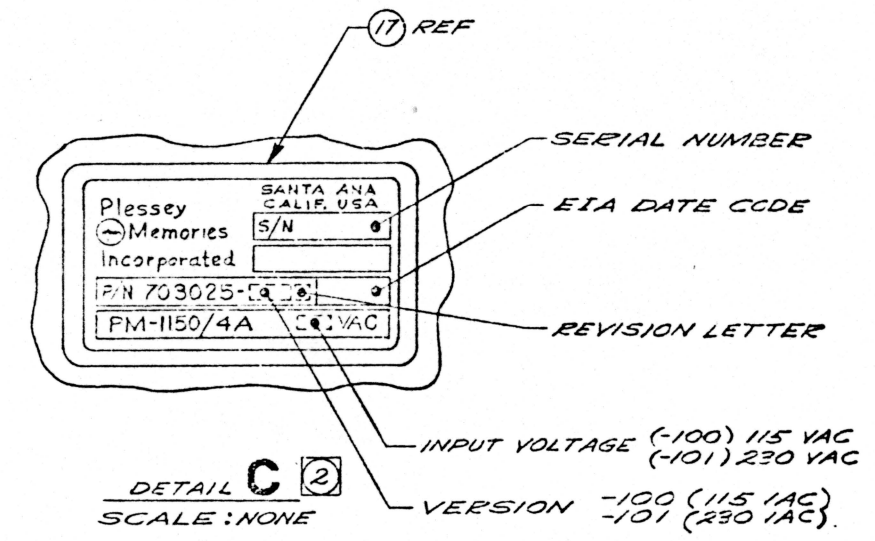
703025



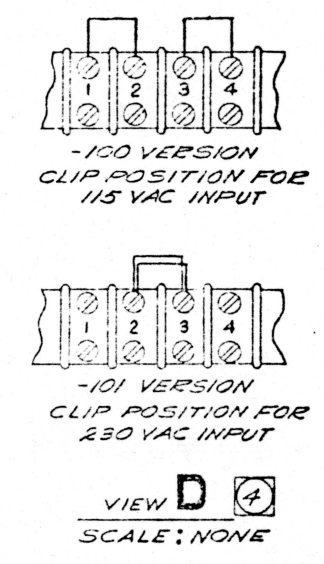
VIEW A-A
(ROTATED 180°)



VIEW D-B



DETAIL C
SCALE: NONE



VIEW D
SCALE: NONE

| | | |
|--------------|----------------|---------|
| SIZE | CODE IDENT NO. | DWG NO. |
| D | 52648 | 703025 |
| SCALE: 1/16" | SHEET 2 OF 2 | |
| DISTR NO. | | |

| PARTS LIST | | Plessey Peripheral Systems | | PREPARED BY | DATE | PLT NO. | REV |
|------------|--|----------------------------|--|-------------|---------|----------------|-------|
| | | | | TOM CONEY | 7-31-78 | PL703025-100 | B |
| | | | | APPROVED BY | DATE | CODE IDENT NO. | SH OF |
| | | | | [Signature] | 8-15-78 | 52648 | 1/5 |
| | | | | DATE | DATE | MODEL NO. | |
| | | | | 8-21-78 | 8-16-78 | PM-1150/4A | |
| | | | | DOC CONTROL | DATE | | |
| | | | | NO. 10 | 8-25-78 | | |

| CHASSIS ASSEMBLY, EXPANSION, (115V) | | | |
|-------------------------------------|-----------------------|---------|-------------|
| LTR | DESCRIPTION | DATE | APPROVED |
| A | REL TO PROD E.O. 5227 | 8-15-78 | [Signature] |
| B | INCORP EO 3522 | 2-7-80 | [Signature] |

PRODUCTION RELEASE

| | | | | | | | | | |
|----------------------|---------|---|---|---|---|---|---|---|----|
| REV STATUS OF SHEETS | REV LTR | 3 | 4 | 5 | 6 | 7 | 8 | 9 | 10 |
| | SHEET | 1 | 2 | 3 | 4 | 5 | 6 | 7 | 8 |

| PARTS LIST | | Plessey Peripheral Systems | | CODE IDENT NO. | PLT NO. | SH | REV | | |
|------------|----------|----------------------------|----------------------------------|-----------------|----------------|------|---------|-------|-----------|
| | | | | 52648 | PL703025-100 | 2 | A | | |
| NOTE | QTY REQD | PART OR IDENTIFYING NO. | NOMENCLATURE OR DESCRIPTION | SPECIFICATION | CODE IDENT NO. | ZONE | F I N D | S Y H | C/I USAGE |
| | 1 | 701511-001 | CHASSIS/10.5 HIGH PLASTIC GUIDES | | | | 1 | | |
| | 1 | 701314-100 | PANEL ASSY, FAN -115V | | | | 2 | | |
| | 1 | 703024-100 | BEZEL ASSY, FM-1150/4A | | | | 3 | | |
| | 1 | A30103 | FAN, 106 CFM, 115V, 50/60 HZ | TORIN | | | 4 | | |
| | 1 | 03-09-1221 | CONNECTOR, RECEPTACLE | MOLEX | | | 5 | | |
| | 1 | 700597-001 | PLATE, CLAMP | | | | 6 | | |
| | 1 | 700586-001 | CLAMP, CABLE | | | | 7 | | |
| | 2 | 02-09-2113 | CONTACT, MALE | MOLEX | | | 8 | | |
| | 1 | 100058-100 | POWER SUPPLY, 115V | | | | 9 | | |
| | 7 IN | 7057/19-1 | WIRE/1000AD, 18 AWG, PVC INSUL. | ALPHA WIRE CORP | | | 10 | | |
| | 7 IN | 7057/19-2 | WIRE/1000AD, 18 AWG, PVC INSUL. | ALPHA WIRE CORP | | | 11 | | |
| | | | | | | | 12 | | |
| | 1 | 701501-100 | PLATE, COVER | | | | 13 | | |

| PARTS LIST | | Plessey Peripheral Systems | | CODE IDENT NO. | PLT NO. | SH | REV | | |
|------------|----------|----------------------------|---|----------------|----------------|------|---------|-------|-----------|
| | | | | 52648 | PL703025-100 | 3 | B | | |
| NOTE | QTY REQD | PART OR IDENTIFYING NO. | NOMENCLATURE OR DESCRIPTION | SPECIFICATION | CODE IDENT NO. | ZONE | F I N D | S Y H | C/I USAGE |
| | 1 | 700982-100 | COVER (BOTTOM) | | | | 14 | | |
| | 1 | 700122-102 | FILTER, AIR-WASHABLE | | | | 15 | | |
| | 2 | 701023-001 | SPRING, FILTER RETAINER | | | | 16 | | |
| | 1 | 700077-001 | NAMEPLATE | | | | 17 | | |
| | 1 | 700922-101 | COVER (TOP) | | | | 18 | | |
| B | 3 | HPC-25 | CABLE CLIP, PRESS | WELMESSER | | | 19 | | |
| | 4 | TYPE A | SCREW, NO. 4 X 1/4 LG PAN HEAD, SELF TAPPING, STEEL | FADYER-KALON | | | 20 | | |
| | | | | | | | 21 | | |
| | 1 | 700571-001 | COVER, VOLTAGE SELECT | | | | 22 | | |
| | 1 PR | 1100024-2 | SLIDE, CHASSIS, BALL BEARING | JOHNATHAN | | | 23 | | |
| | 2 | MS51957-13 | SCREW, PAN HD. 4-40 X 1/4 LG | | | | 24 | | |
| | 6 | MS24693-C271 | SCREW/FLAT HEAD 100° 10-32 X 7/16 LG | | | | 25 | | |
| | 2 | MS24693-C51 | SCREW/FLAT HEAD 100° 6-32 X 5/8 LG | | | | 26 | | |

| PARTS LIST | | Plessey Peripheral Systems | | CODE IDENT NO. | PLT NO. | SH | REV | | |
|------------|----------|----------------------------|---|----------------|----------------|------|---------|-------|-----------|
| | | | | 52648 | PL703025-100 | 4 | A | | |
| NOTE | QTY REQD | PART OR IDENTIFYING NO. | NOMENCLATURE OR DESCRIPTION | SPECIFICATION | CODE IDENT NO. | ZONE | F I N D | S Y H | C/I USAGE |
| | 2 | MS51957-27 | SCREW/FAN HEAD 6-32 X 5/16 LG | | | | 27 | | |
| | 18 | MS24693-26 | SCREW/FLAT HEAD 100° 6-32 X 3/8 LG | | | | 28 | | |
| | | | | | | | 29 | | |
| | 3 | MS51958-61 | SCREW/FAN HEAD 10-32 X 3/8 LG | | | | 31 | | |
| | | | | | | | 32 | | |
| | 4 | MS51957-30 | SCREW/FAN HEAD 6-32 X 1/2 LG | | | | 33 | | |
| | | | | | | | 34 | | |
| | | | | | | | 35 | | |
| | 4 | MS51959-79 | SCREW/FLAT HEAD 82° 1/4 X 20 X 1/2 LG | | | | 36 | | |
| | 8 | MS55333-39 | WASHER, LOCK, INT TOOTH, NO. 10 | | | | 37 | | |
| | 2 | NDA-10 | FUSE/10 AMP, 250V, SLOW BLOW 1/4 DIA X 1/4 LG | BUSSMANN | | | 38 | | |
| | | | | | | | 39 | | |

The information herein is the property of PLESSEY PERIPHERAL SYS. Transmittal receipt or possession of the information does not imply license, or imply any rights to use, sell, or manufacture from this information and no reproduction or publication of it, in whole or in part, shall be made without written authorization from PLESSEY PERIPHERAL SYS.

SIZE B
 CODE IDENT NO. 52648
 DWG NO. PL 703025-100
 SHEET 1 OF 2
 REV A

| PARTS LIST | | Plessey Peripheral Systems | | CODE IDENT NO. | PARTS LIST NO. | SH | REV | C/T USAGE | | | |
|------------|-------------------------|--------------------------------|------------------------------|----------------|----------------|---------|-------|-----------|-------------|-------|-----------|
| QTY REQD | PART OR IDENTIFYING NO. | NOMENCLATURE OR DESCRIPTION | SPECIFICATION | CODE IDENT NO. | ZONE | F I N D | S Y M | C/T CODE | INT ON HAND | P A R | UNIT COST |
| | | | | | | 40 | | | | | |
| | | | | | | 41 | | | | | |
| 8 | NAS671-10 | NUT, HEX, 10-32 | | | | 42 | | | | | |
| 4 | M535333-37 | WASHER, LOCK, INT TOOTH, NO. 6 | | | | 43 | | | | | |
| 4 | NAS 671CG | NUT, HEX, SM PATTERN, NO. 6 | | | | 44 | | | | | |
| REF | GRADE E | COMPOUND, LOCKING | LOCTITE | | | 45 | | | | | |
| 1 | PLT15M-C | TIE, CABLE | PANDUIT | | | 46 | | | | | |
| AR | FIT-105-3/4 | TUBING, HEAT SHRINK | ALPHA WIRE CORP | | | 47 | | | | | |
| REF | SNG3 WRAP 3 | SOLDER | | | | 48 | | | | | |
| | | | | | | 49 | | | | | |
| ③ | 1 | 701551-100 | HARDWARE PACK, MISC MTG HDWR | | | 50 | | | | | |
| | | | | | | 51 | | | | | |
| | | | | | | 52 | | | | | |

The information hereon is the property of PLESSEY PERIPHERAL SYS. Transmittal receipt or possession of the information does not imply license, or imply any rights to use, sell, or manufacture from this information and no reproduction or publication of it, in whole or in part, shall be made without written authorization from PLESSEY PERIPHERAL SYS.

SIZE **B**

CODE IDENT NO. 52648

DWG NO. PL 703025-100

REV A SHEET 2 of 2

| PARTS LIST | | Plessey Peripheral Systems | | PREPARED BY | DATE | PROJECT NO. | REV | |
|-------------------------------------|--|----------------------------|--------------|-------------|---------|--------------|------|----------|
| CHASSIS ASSEMBLY, EXPANSION, (230V) | | 52648 | PL703025-101 | TOM CONEY | 7-31-78 | PL703025-101 | C | |
| REV STATUS OF SHEETS | | REV LTR | C | B | C | A | A | |
| LTR | | DESCRIPTION | DATE | APPROVED | LTR | DESCRIPTION | DATE | APPROVED |
| A | | REL TO PROD E.O. 5227 | 8-15-78 | [Signature] | | | | |
| B | | INCOMP EO 2921 | 1-23-79 | [Signature] | | | | |
| C | | INCOMP EO 3522 | 2-7-80 | [Signature] | | | | |
| REV STATUS OF SHEETS | | REV LTR | 1 | 2 | 3 | 4 | 5 | 6 |
| | | SHEET | 1 | 2 | 3 | 4 | 5 | 6 |

PRODUCTION RELEASE

| PARTS LIST | | Plessey Peripheral Systems | | CODE IDENT NO. | PL703025-101 | SH 2 | REV B |
|------------|----------|----------------------------|---|-----------------|----------------|------|---------|
| NOTE | QTY REQD | PART OR IDENTIFYING NO. | NOMENCLATURE OR DESCRIPTION | SPECIFICATION | CODE IDENT NO. | ZONE | F I N D |
| | 1 | 701511-001 | CHASSIS / 10.5 HIGH PLASTIC GUIDES | | | 1 | |
| | 1 | 701314-100 | PANEL ASSY, FAN -230V | | | 2 | |
| | 1 | 703024-100 | BEZEL ASSY, FM-1150/4A | | | 3 | |
| B | 1 | A30103 | FAN, 106 CFM, 115V, 50/60 HZ | TORIN | | 4 | |
| | 1 | 03-09-1021 | CONNECTOR, RECEPTACLE | MOLEX | | 5 | |
| | 1 | 700587-001 | PLATE, CLAMP | | | 6 | |
| | 1 | 700586-001 | CLAMP, CABLE | | | 7 | |
| | 2 | 02-09-2118 | CONTACT, MALE | MOLEX | | 8 | |
| | 1 | 100058-101 | POWER SUPPLY, 230V | | | 9 | |
| | 7 IN | 7057/19-1 | WIRE / 18 GA, 18 AWG, PVC INSUL. / 19/30 STRAND, COLOR: WHITE | ALPHA WIRE CORP | | 10 | |
| | 7 IN | 7057/19-2 | WIRE / 18 GA, 18 AWG, PVC INSUL. / 19/30 STRAND, COLOR: BLK | ALPHA WIRE CORP | | 11 | |
| | | | | | | 12 | |
| | 1 | 701501-100 | PLATE, COVER | | | 13 | |

| PARTS LIST | | Plessey Peripheral Systems | | CODE IDENT NO. | PL703025-101 | SH 3 | REV C |
|------------|----------|----------------------------|---|----------------|----------------|------|---------|
| NOTE | QTY REQD | PART OR IDENTIFYING NO. | NOMENCLATURE OR DESCRIPTION | SPECIFICATION | CODE IDENT NO. | ZONE | F I N D |
| | 1 | 700922-100 | COVER (BOTTOM) | | | 14 | |
| | 1 | 700122-102 | FILTER, AIR-WASHABLE | | | 15 | |
| | 2 | 701023-001 | SPRING, FILTER RETAINER | | | 16 | |
| | 1 | 700077-001 | NAMEPLATE | | | 17 | |
| | 1 | 700922-101 | COVER (TOP) | | | 18 | |
| C | 3 | HPC-25 | CABLE CLIP, PRESS | NECESSER | | 19 | |
| | 4 | TYPE A | SCREW, NO. 4 X 1/4 LG PAN HEAD, SELF TAPPING, STEEL | FAKOR-KALON | | 20 | |
| | | | | | | 21 | |
| | 1 | 700571-001 | COVER, VOLTAGE SELECT | | | 22 | |
| | 1 PR | 1100D-24-2 | SLIDE, CHASSIS, BALL BEARING | JGHNATHAN | | 23 | |
| | 2 | MS51957-13 | SCREW, PAN HD. 4-40 X 1/4 LG | | | 24 | |
| | 6 | MS24673-C271 | SCREW / FLAT HEAD 100° / 10-32 X 7/16 LG | | | 25 | |
| | 2 | MS24693-C51 | SCREW / FLAT HEAD 100° / 6-32 X 5/8 LG | | | 26 | |

| PARTS LIST | | Plessey Peripheral Systems | | CODE IDENT NO. | PL703025-101 | SH 4 | REV A |
|------------|----------|----------------------------|--|----------------|----------------|------|---------|
| NOTE | QTY REQD | PART OR IDENTIFYING NO. | NOMENCLATURE OR DESCRIPTION | SPECIFICATION | CODE IDENT NO. | ZONE | F I N D |
| | 2 | MS51957-27 | SCREW / PAN HEAD / 6-32 X 5/16 LG | | | 27 | |
| | 13 | MS24693-26 | SCREW / FLAT HEAD 100° / 6-32 X 3/8 LG | | | 28 | |
| | | | | | | 29 | |
| | 8 | MS51958-61 | SCREW / PAN HEAD / 10-32 X 3/8 LG | | | 31 | |
| | | | | | | 32 | |
| | 4 | MS51957-30 | SCREW / PAN HEAD / 6-32 X 1/2 LG | | | 33 | |
| | | | | | | 34 | |
| | | | | | | 35 | |
| | 4 | MS51959-79 | SCREW / FLAT HEAD 82° / 1/4 X 20 X 1/2 LG | | | 36 | |
| | 8 | MS35333-39 | WASHER, LOCK, INT TOOTH, NO. 10 | | | 37 | |
| | 2 | MDA-5 | FUSE / 5 AMP, 250V, SLOW BLOW / 1/4 DIA X 1 1/4 LG | BUSSMANN | | 38 | |
| | | | | | | 39 | |

SIZE D
 CODE IDENT NO. 52648
 DWG NO. PL 703025-101
 REV B
 SHEET 1 OF 2
 SCALE
 The information hereon is the property of PLESSEY PERIPHERAL SYS. Transmittal, receipt or possession of the information does not constitute license, or imply any rights to use, sell, or manufacture from this information, and no reproduction or publication of it, in whole or in part, shall be made without written authorization from PLESSEY PERIPHERAL SYS.

| PARTS LIST | | Plessey Peripheral Systems | | CODE IDENT NO. | PARTS LIST NO. | SH | REV | | | | | |
|------------|-------------------------|-------------------------------|------------------------------|----------------|----------------|-------|------|-----------|-------------|---------|-----------|--|
| | | | | 52648 | PL703025-101 | 5 | A | | | | | |
| QTY REQ | PART OR IDENTIFYING NO. | NOMENCLATURE OR DESCRIPTION | SPECIFICATION | CODE IDENT NO. | ZONE | FIN D | SY N | C/I USAGE | | | | |
| | | | | | | | | C/I CODE | INT ON HAND | P A R T | UNIT COST | |
| | | | | | | 40 | | | | | | |
| | | | | | | 41 | | | | | | |
| 8 | NAS671-10 | NUT, HEX, 10-32 | | | | 42 | | | | | | |
| 4 | MS35333-37 | WASHER, LOCK, INT TOOTH, NO.6 | | | | 43 | | | | | | |
| 4 | NAS 671C6 | NUT, HEX, SM PATTERN, NO.6 | | | | 44 | | | | | | |
| REF | GRADE E | COMPOUND, LOCKING | LOCTITE | | | 45 | | | | | | |
| 1 | PLT1.5M-CP | TIE, CABLE | PANDUIT | | | 46 | | | | | | |
| AR | FIT-105-3/16 | TUBING, HEAT SHRINK | ALPHA WIRE CORP | | | 47 | | | | | | |
| REF | SNG 3 WRAP 3 | SOLDER | | | | 48 | | | | | | |
| | | | | | | 49 | | | | | | |
| ③ | 1 | 701551-100 | HARDWARE PACK, MISC MTG HDWR | | | 50 | | | | | | |
| | | | | | | 51 | | | | | | |
| | | | | | | 52 | | | | | | |

The information hereon is the property of PLESSEY PERIPHERAL SYS. Transmittal receipt or possession of the information does not comply, license, or imply any rights to use, sell, or manufacture from this information and no reproduction or publication of it, in whole or in part, shall be made without written authorization from PLESSEY PERIPHERAL SYS.

Form 000087

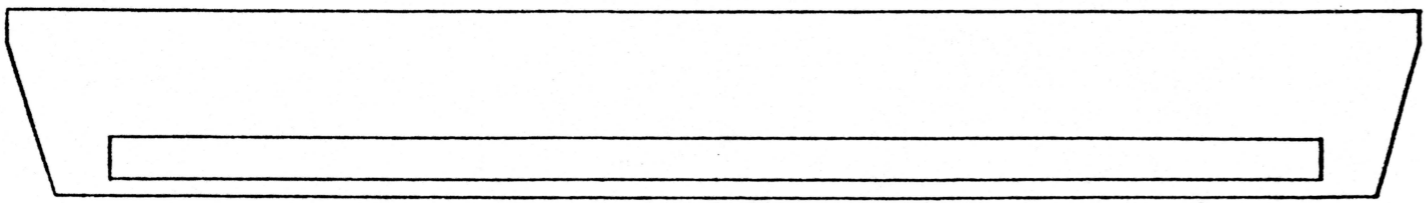
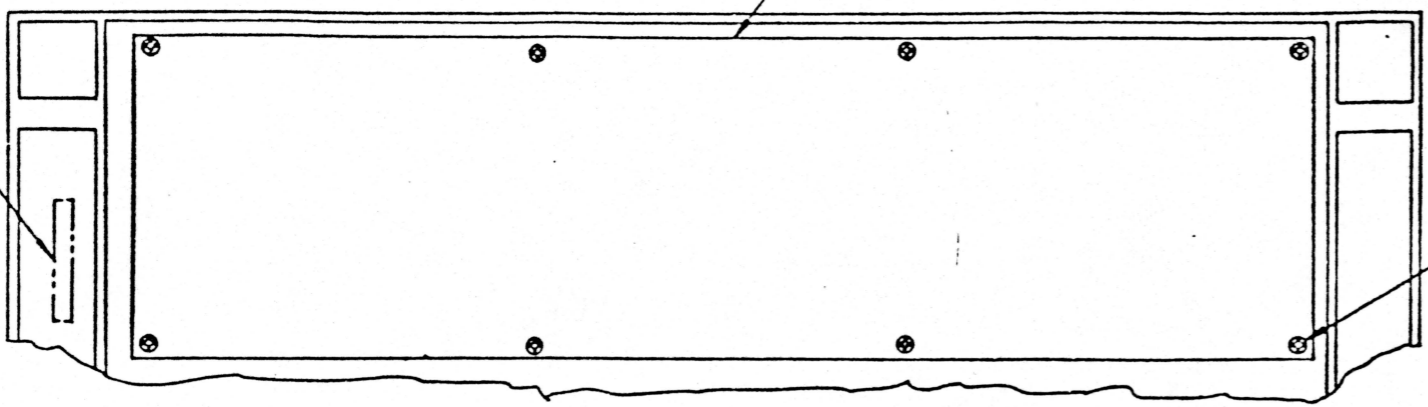
| | | |
|-------|----------------|---------------|
| SIZE | CODE IDENT NO. | DWG NO. |
| B | 52648 | PL 703025-101 |
| SCALE | REV | SHEET |
| | B | 2 of 2 |

THE INFORMATION HEREON IS THE PROPERTY OF PLESSEY MEMORIES INC. IT IS TO BE KEPT CONFIDENTIAL AND IS NOT TO BE DISCLOSED TO ANY OTHER PARTY WITHOUT THE WRITTEN PERMISSION OF PLESSEY MEMORIES INC.

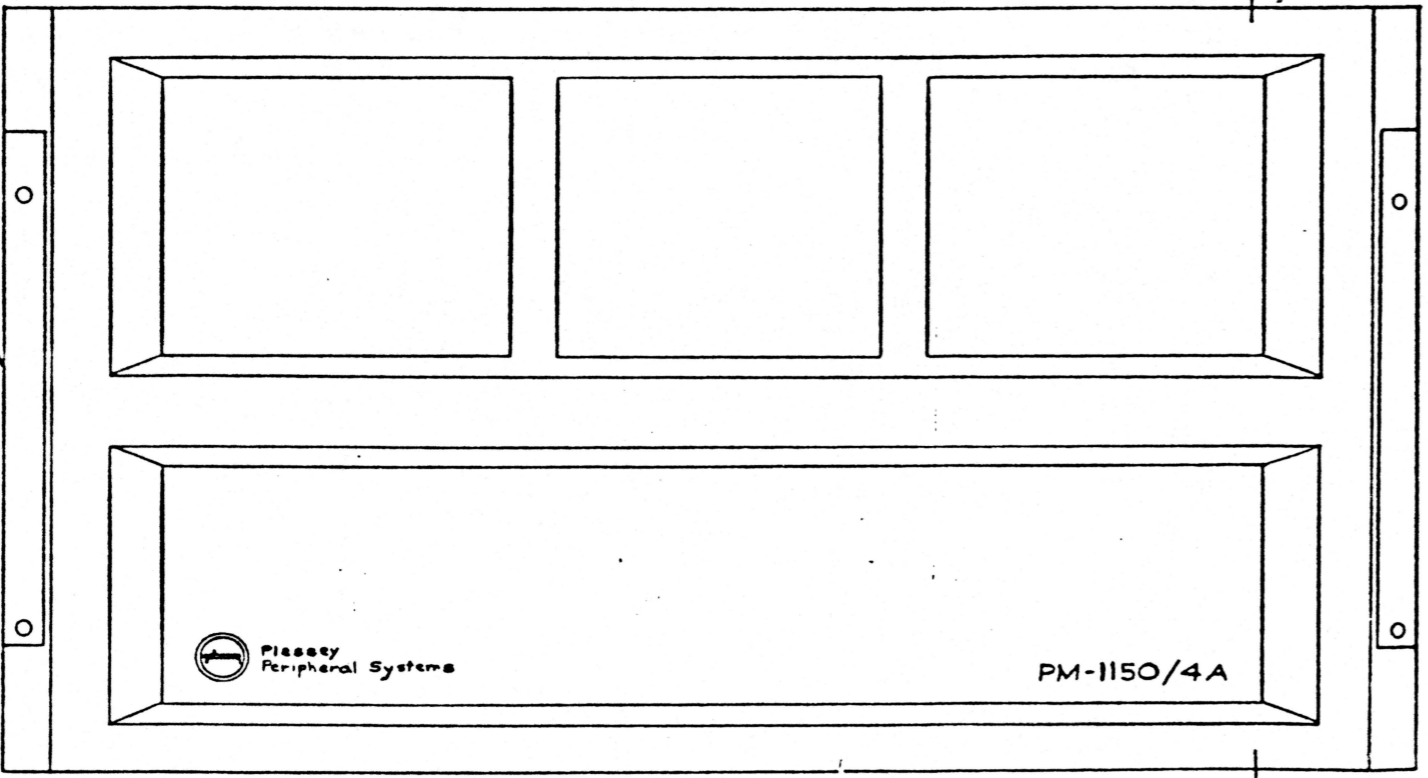
| REVISIONS | | DATE | APPROVED |
|-----------|---|---------------------|----------|
| 1 | A | REL TO PROD EO 5227 | 8-15-78 |

NEARSIDE ②

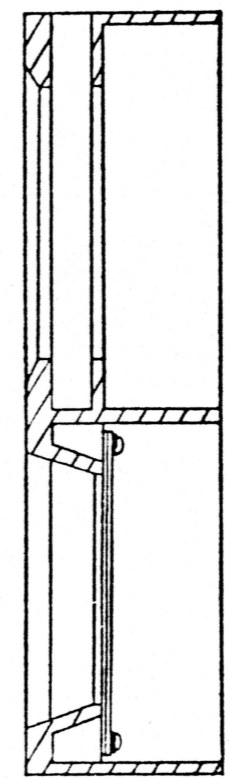
⑤
⑥
⑦
8 PLACES



A ←



A ←



SECTION A-A

PRODUCTION RELEASE

| PART/ASSY NO & QTY PER ASSY | | PARTS LIST | | SPEC/SOURCE | | CODE IDENT NO. | FIND NO. |
|-----------------------------|----------------------|------------------|---------|-------------------------------|----------------|----------------|--------------|
| A | DO NOT SCALE DRAWING | CONTRACT NO. | | Plessey Memories Incorporated | | | |
| 100 | 2025-01 PM-1150/4A | DRAWN BY | 8-9-78 | DWG TITLE | | | |
| 100 | 2025-01 PM-1150/4A | CHECKED BY | | BEZEL ASSEMBLY | | | |
| | | ENGR | | PM-1150/4A | | | |
| | | PROD DESIGNED BY | 9-11-78 | SHEET | CODE IDENT NO. | DWG NO. | |
| | | APPROVALS | | D 52648 | 703024 | | |
| | | | | SCALE | | | |
| | | | | | | | SHEET 1 OF 1 |
| | | | | | | | DATE 2-24-78 |

② MARK ASSEMBLY NUMBER, LATEST ASSEMBLY REVISION LETTER WITH .12 HIGH CHARACTERS USING BLACK INK PER MIL-M-13291, GROUP III. LOCATION APPROXIMATELY AS SHOWN.

1. ASSEMBLE AND INSPECT PER WORKMANSHIP STANDARDS MANUAL. NOTES: UNLESS OTHERWISE SPECIFIED

703024 A

A

| | | | | | | | | | |
|------------|----------------------|-------------|-----------|------|----------|----------------|---------------|---------|---|
| PARTS LIST | Plessey Microsystems | PREPARED BY | TOM COMEY | DATE | 7-28-78 | PARTS LIST NO. | PL 703024-100 | REV LTR | A |
| | | CHECKED BY | L. Dunbar | DATE | 8-15-78 | CODE IDENT NO. | 52648 | SH | 1 |
| | | RESP ENG | W. Perry | DATE | 8-21-78 | SH | 2 | OF | 2 |
| | | APPROV | John Doe | DATE | 8-16-78 | MODEL NO. | PM-1150/4A | | |
| REV LTR | | DESCRIPTION | | DATE | APPROVED | | | | |

| LTR | DESCRIPTION | DATE | APPROVED | LTR | DESCRIPTION | DATE | APPROVED |
|-----|---------------------|---------|-------------|-----|-------------|------|----------|
| A | REL TO PROD EO 5227 | 8-15-78 | [Signature] | | | | |

PRODUCTION RELEASE

| | | | | | | | | | | | | | | | |
|----------------------|---------|---|---|---|---|---|---|---|---|---|----|--|--|--|--|
| REV STATUS OF SHEETS | REV LTR | A | A | | | | | | | | | | | | |
| | SHEET | 1 | 2 | 3 | 4 | 5 | 6 | 7 | 8 | 9 | 10 | | | | |

| | | | | | | | | | |
|------------|----------------------------|----------------|-------|----------------|---------------|----|---|---------|---|
| PARTS LIST | Plessey Peripheral Systems | CODE IDENT NO. | 52648 | PARTS LIST NO. | PL 703024-100 | SH | 2 | REV LTR | A |
|------------|----------------------------|----------------|-------|----------------|---------------|----|---|---------|---|

| QTY REQD | PART OR IDENTIFYING NO. | NOMENCLATURE OR DESCRIPTION | SPECIFICATION | CODE IDENT NO. | ZONE | F I N D | S Y S T E M | C/I USAGE | | | | |
|----------|-------------------------|---------------------------------------|---------------|----------------|------|---------|-------------|-----------|-------------|-------|-----------|--|
| | | | | | | | | C/I CODE | INT OR HAND | P A R | UNIT COST | |
| 1 | 701040-001 | PANEL, FRONT | | | | 1 | | | | | | |
| 1 | 703023-100 | FRONT PANEL ASSY, PM-1150/4A | | | | 2 | | | | | | |
| | | | | | | 3 | | | | | | |
| | | | | | | 4 | | | | | | |
| 8 | MS51957-29 | SCREW / FAN HEAD / 6-32 X 7/16 LG | | | | 5 | | | | | | |
| 8 | MS35333-37 | WASHER / LOCK, INTERNAL TOOTH, NO. 6 | | | | 6 | | | | | | |
| 8 | MS15795-806 | WASHER / FLAT, GENERAL PURPOSE, NO. 6 | | | | 7 | | | | | | |
| | | | | | | 8 | | | | | | |
| | | | | | | 9 | | | | | | |
| | | | | | | 10 | | | | | | |
| | | | | | | 11 | | | | | | |
| | | | | | | 12 | | | | | | |
| | | | | | | 13 | | | | | | |

SIZE **B** SCALE

CODE IDENT NO. DWG NO. PL 703024-100

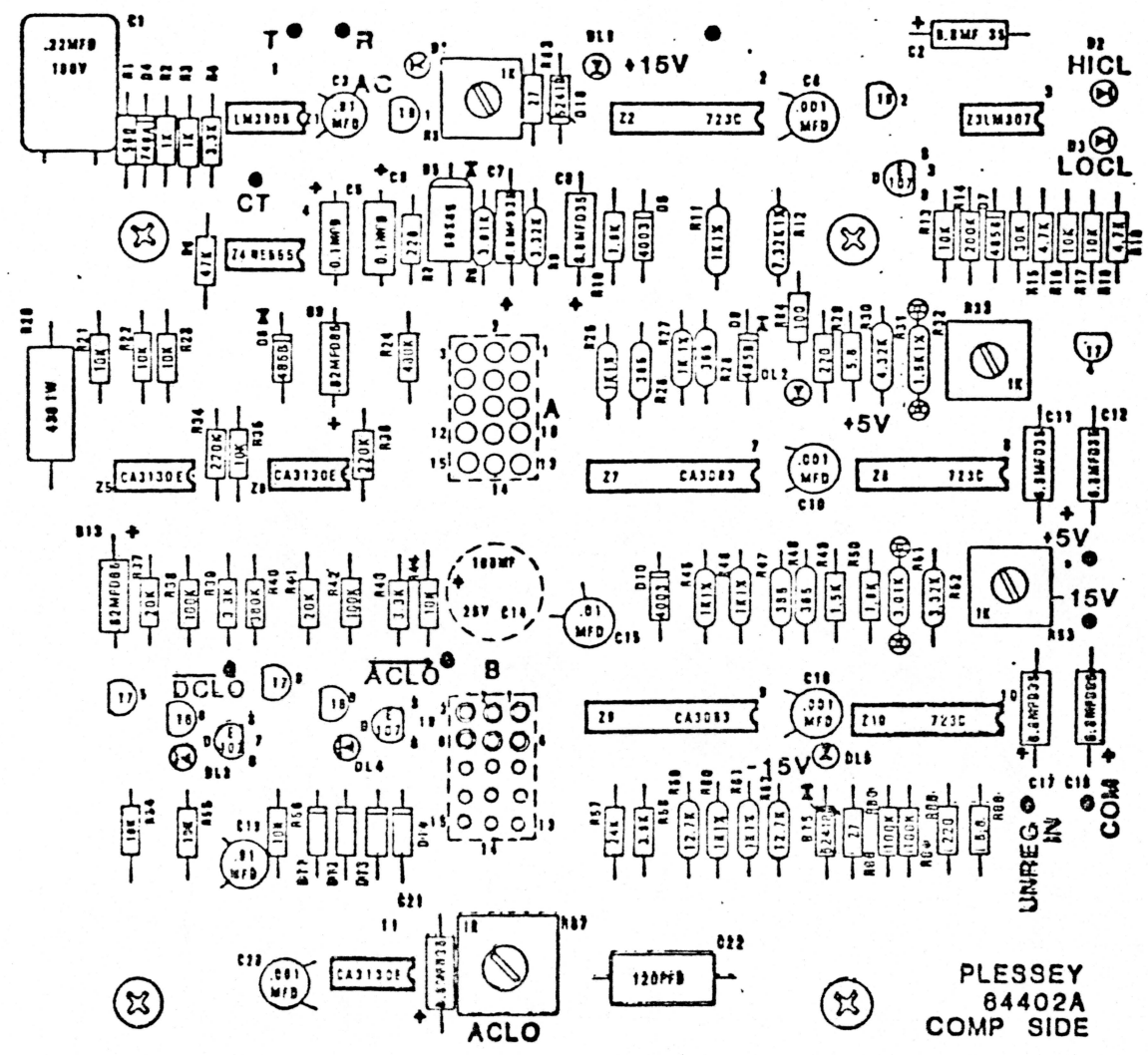
52648

REV A SHEET 1 of 1

The information hereon is the property of PLESSEY PERIPHERAL SYS. Transmittal receipt or possession of the information does not comply, license, or imply any rights to use, sell, or manufacture from this information and no reproduction or publication of it, in whole or in part, shall be made without written authorization from PLESSEY PERIPHERAL SYS.

4000
4000
4000

ALL PARTS TO BE NO MORE THAN 1/8" DRY CARD



DATE/REV
0002-0700

1/2 SMD'S
SMD'S

DATE
0002-0700

-15V

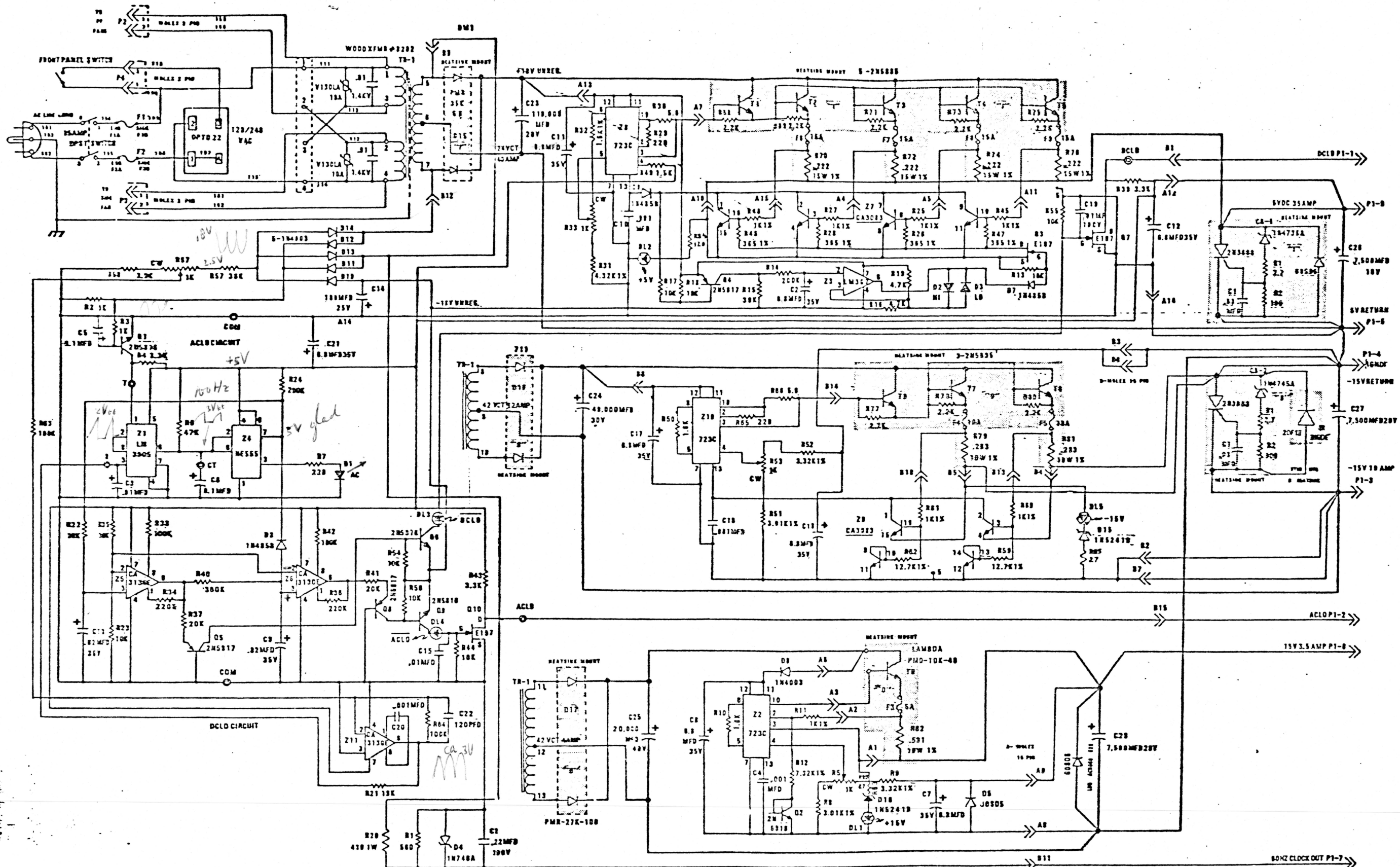
PLESSEY
64402A
SILKSCREEN

100058

| | | |
|-------|----------------|--------------|
| SIZE | CODE IDENT NO. | DWG NO. |
| B | 52648 | 64402A |
| SCALE | REV | A |
| | | SHEET 1 of 2 |

The information hereon is the property of PLESSEY PERIPHERAL SYS. Transmittal receipt or possession of the information does not comply license, or imply any rights to use, sell, or manufacture from this information and no reproduction or publication of it in whole or in part, shall be made without written authorization from PLESSEY PERIPHERAL SYS.

Form 000087



DL3 & DL4 ARE HI EFFICIENCY LEDS ϕ 5082-4855 HP

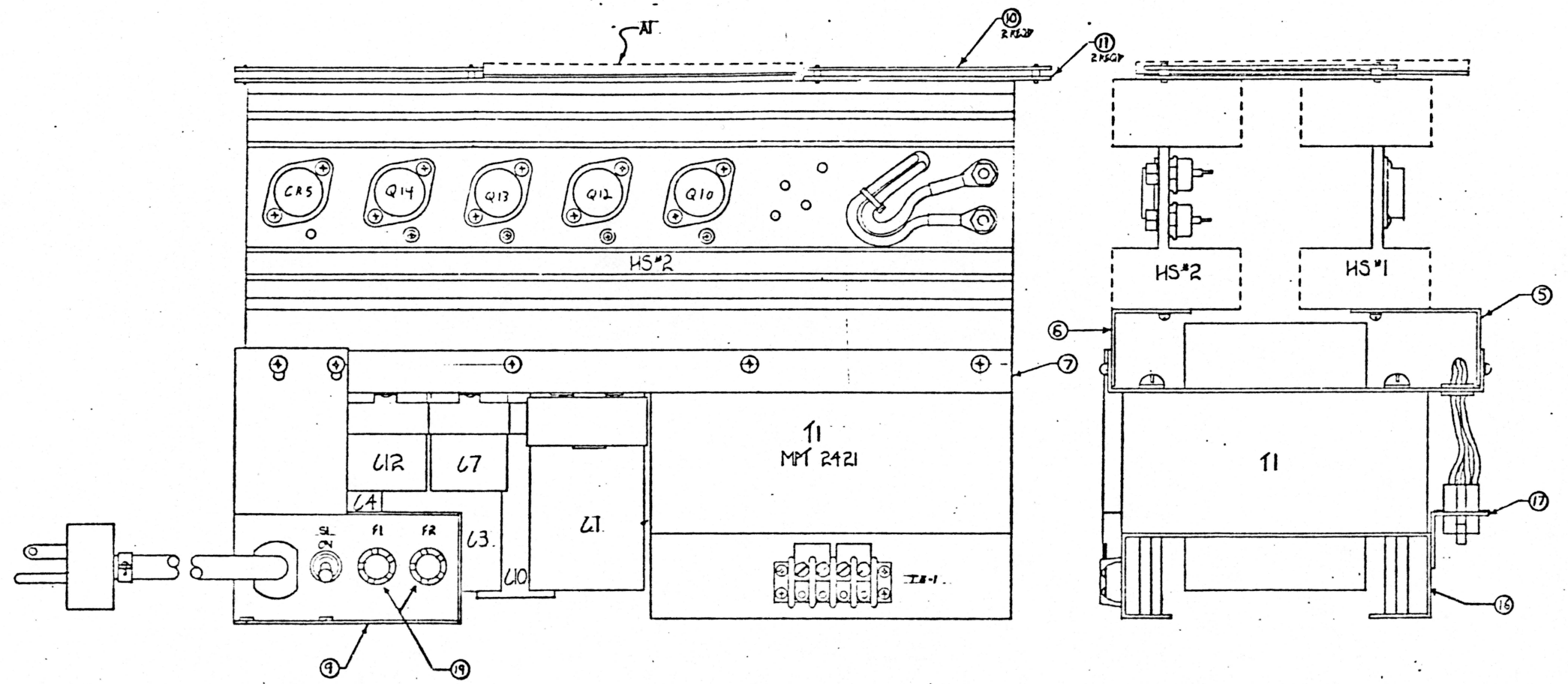
DL1, DL2, DL5 ARE VOLTAGE SENSING LEOS
 ϕ 5082-4732
 SALS

The information hereon is the property of PLESSEY PERIPHERAL SYS. Transmittal receipt or possession of the information does not imply license, or imply any rights to use, sell, or manufacture from this information and no reproduction or publication of it, in whole or in part, shall be made without written authorization from PLESSEY PERIPHERAL SYS.

Form 00087

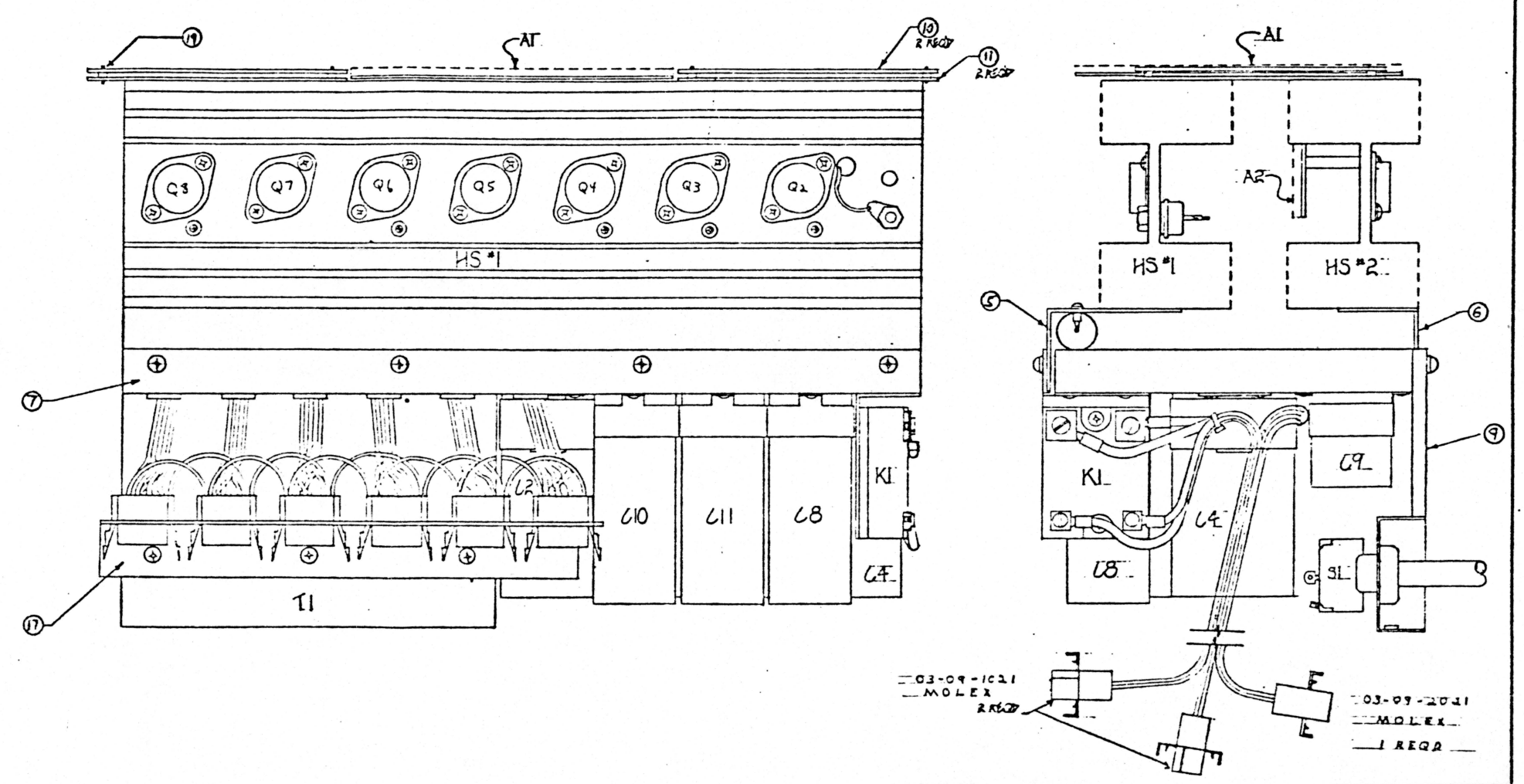
| | | |
|-------|----------------|---------|
| SIZE | CODE IDENT NO. | DWG NO. |
| B | 52648 | 64402A |
| SCALE | REV | SHEET |
| | A | 2 OF 2 |

| REVISIONS | | | | |
|-----------|-----|-------------|------|----------|
| ZONE | LTR | DESCRIPTION | DATE | APPROVED |
| | | | | |



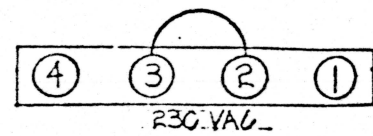
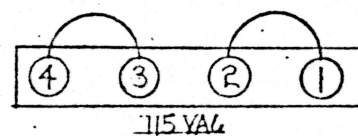
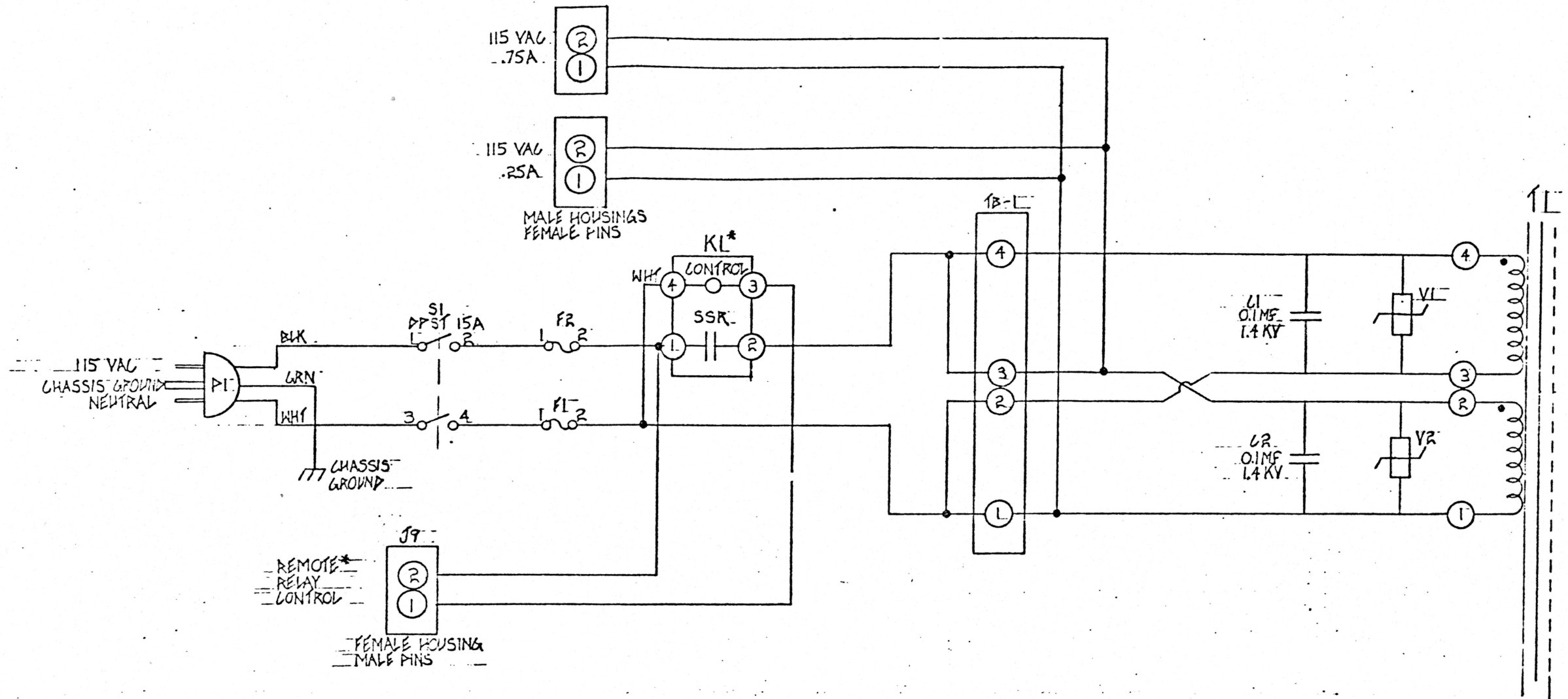
| | | | | | |
|--|-----------|--------------|---------------|--------------------------------|--|
| UNLESS OTHERWISE SPECIFIED DIMENSIONS ARE IN INCHES TOLERANCES ARE | | CONTRACT NO. | | MAGNETIC POWER TECHNOLOGY INC. | |
| FRACTIONS | DECIMALS | ANGLES | APPROVALS | DATE | FINAL ASSEMBLY: POWER SUPPLY (MODEL 1600) |
| XX = 0.00 | XX = 0.00 | ± 1.0° | DRN JAYE WOOD | 4-20-83 | |
| MATERIAL | FINISH | SCALE | CHECKED | SIZE | CODE IDENT NO |
| | | | | D | MP 01600 |
| | | | | | DRAWING NO |
| | | | | | MP 01600 |
| | | | | | REV |
| | | | | | A |
| | | | | | SCALE 1:1 |
| | | | | | 16005X SHEET 1 OF 2 |

| REVISIONS | | | | |
|-----------|-----|-------------|------|----------|
| ZONE | LTN | DESCRIPTION | DATE | APPROVED |
| | | | | |



| | | | | |
|---|--|----------------------|--------------------------------|--|
| UNLESS OTHERWISE SPECIFIED DIMENSIONS ARE IN INCHES TOLERANCES ARE: FRACTIONS DECIMALS ANGLES ±.030 ±.005 ±.1° ±.015 ±.010 | | CONTRACT NO. | MAGNETIC POWER TECHNOLOGY INC. | |
| MATERIAL | | APPROVALS | DATE | FINAL ASSEMBLY POWER SUPPLY (MODEL 1600) |
| FINISH | | CHECKED | | SIZE CODE IDENT NO. DRAWING NO. |
| NEXT ASSY USED ON | | | | D MP1 01600 R/A |
| APPLICATION | | DO NOT SCALE DRAWING | | SCALE 1:1 160058 SHEET 2 OF 2 |

| ZONE | | LTR | | REVISIONS | DATE | APPROVED |
|------|--|-----|--|-------------|------|----------|
| | | | | DESCRIPTION | | |
| | | | | | | |

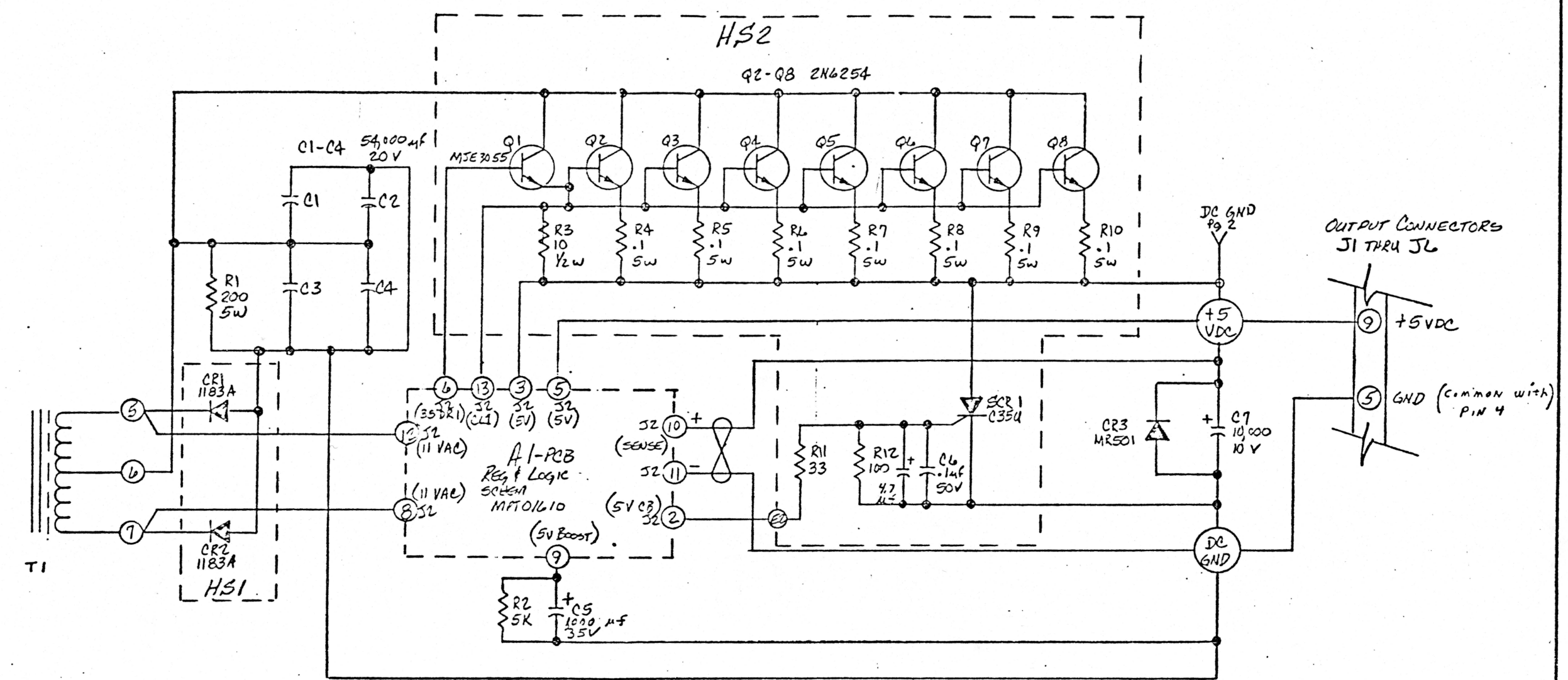


INPUT JUMPER CONNECTIONS ON TB-1

* KI & J9 ARE ONLY USED WITH OPTION -R00 & -R01

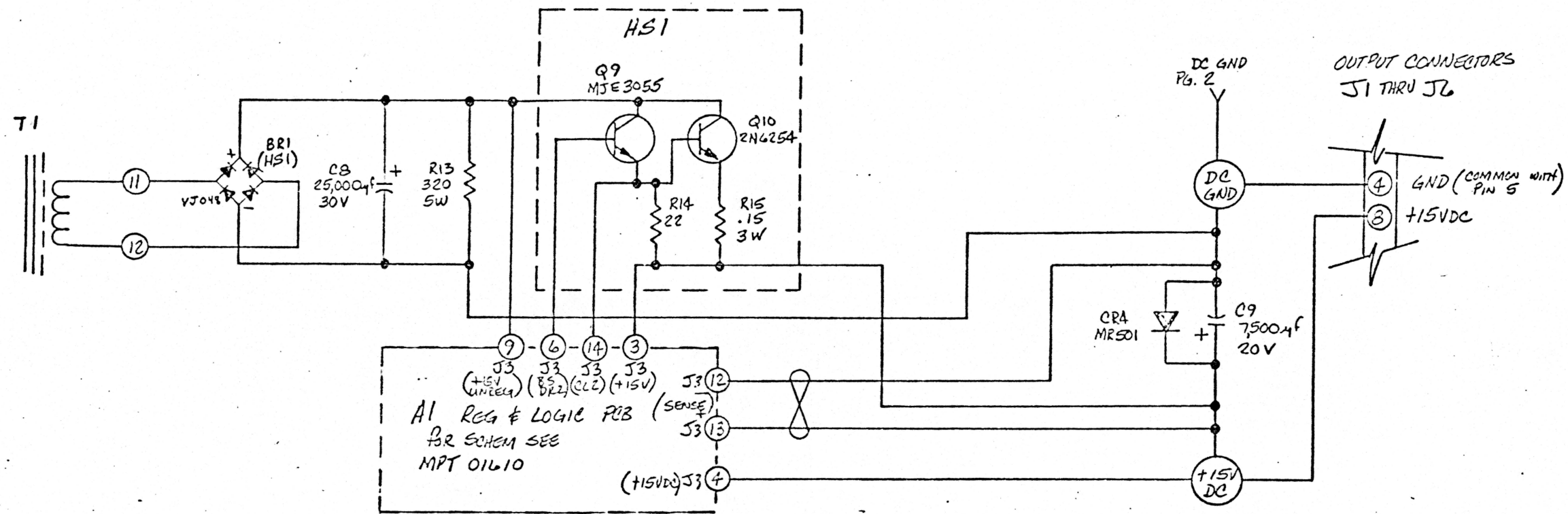
| | | | | | |
|---|-------------------------------|----------------------|----------------|--------------------------------|---------------------|
| UNLESS OTHERWISE SPECIFIED DIMENSIONS ARE IN INCHES TOLERANCES ARE: | | CONTRACT NO. | | MAGNETIC POWER TECHNOLOGY INC. | |
| FRACTIONS ±.030 | DECIMALS .XX ±.020 .XXX ±.010 | ANGLES ±1.0° | APPROVALS | DATE | INPUT AC CIRCUIT |
| MATERIAL | | DRAWN <i>W. WOOD</i> | | 4-25-2 | MODEL #1600 |
| FINISH | | CHECKED | | | |
| NEXT ASSY | USED ON | SIZE C | CODE IDENT NO. | DRAWING NO. MPT 01602 | REV. A |
| APPLICATION | | DO NOT SCALE DRAWING | | SCALE 1/8" | 100058 SHEET 1 OF 4 |

| REVISIONS | | | | |
|-----------|-----|-------------|------|----------|
| ZONE | LTR | DESCRIPTION | DATE | APPROVED |
| | | SEE SHEET 1 | | |



| | | | | |
|---|---------|----------------------|----------|--|
| UNLESS OTHERWISE SPECIFIED DIMENSIONS ARE IN INCHES TOLERANCES ARE: FRACTIONS DECIMALS ANGLES ±.030 .XX ± .020 ±1.0° .XXX ± .010 | | CONTRACT NO. | | MAGNETIC POWER TECHNOLOGY INC. |
| | | APPROVALS | DATE | |
| MATERIAL | | DRAWN <i>KACCS</i> | 12-12-77 | SCHEMATIC - Power Supply + 5VDC REGULATOR |
| FINISH | | CHECKED | | |
| NEXT ASSY | USED ON | | | SIZE C CODE IDENT NO. DRAWING NO. MPT-01602 REV. |
| APPLICATION | | DO NOT SCALE DRAWING | | SCALE 100058 SHEET 2 OF 4 |

| REVISIONS | | | | |
|-----------|-----|-------------|------|----------|
| ZONE | LTR | DESCRIPTION | DATE | APPROVED |
| | | | | |

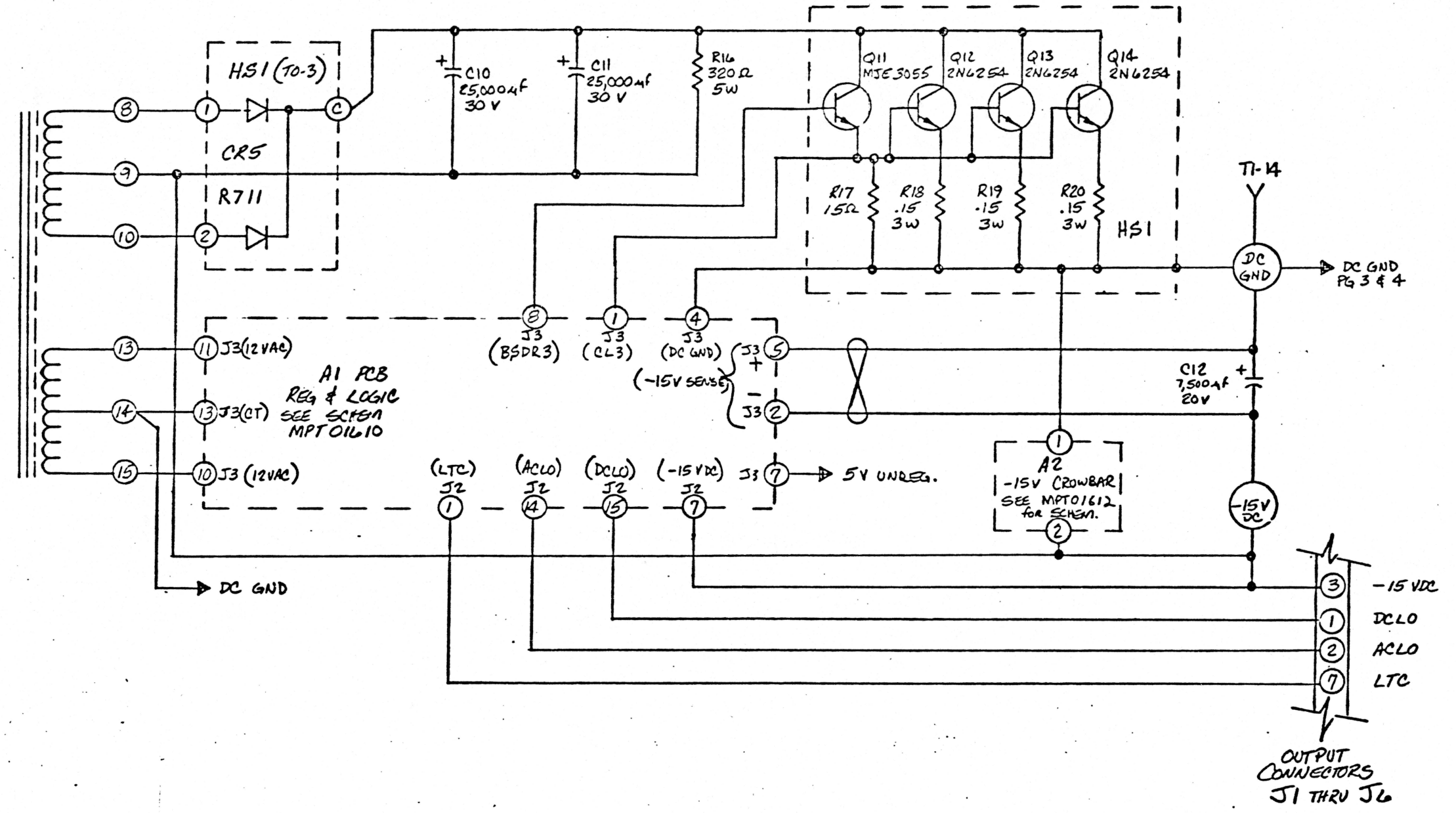


9 (J3) (+15V UNREG)
 6 (J3) (RS) (22)
 14 (J3) (C2) (+15V)
 3 (J3) (+15V)
 J3 (12) (SENSE)
 J3 (13)
 (+15VDC) J3 (4)

AI REG & LOGIC PWB (SENSE)
 PR SCHEM SEE
 MPT 01610

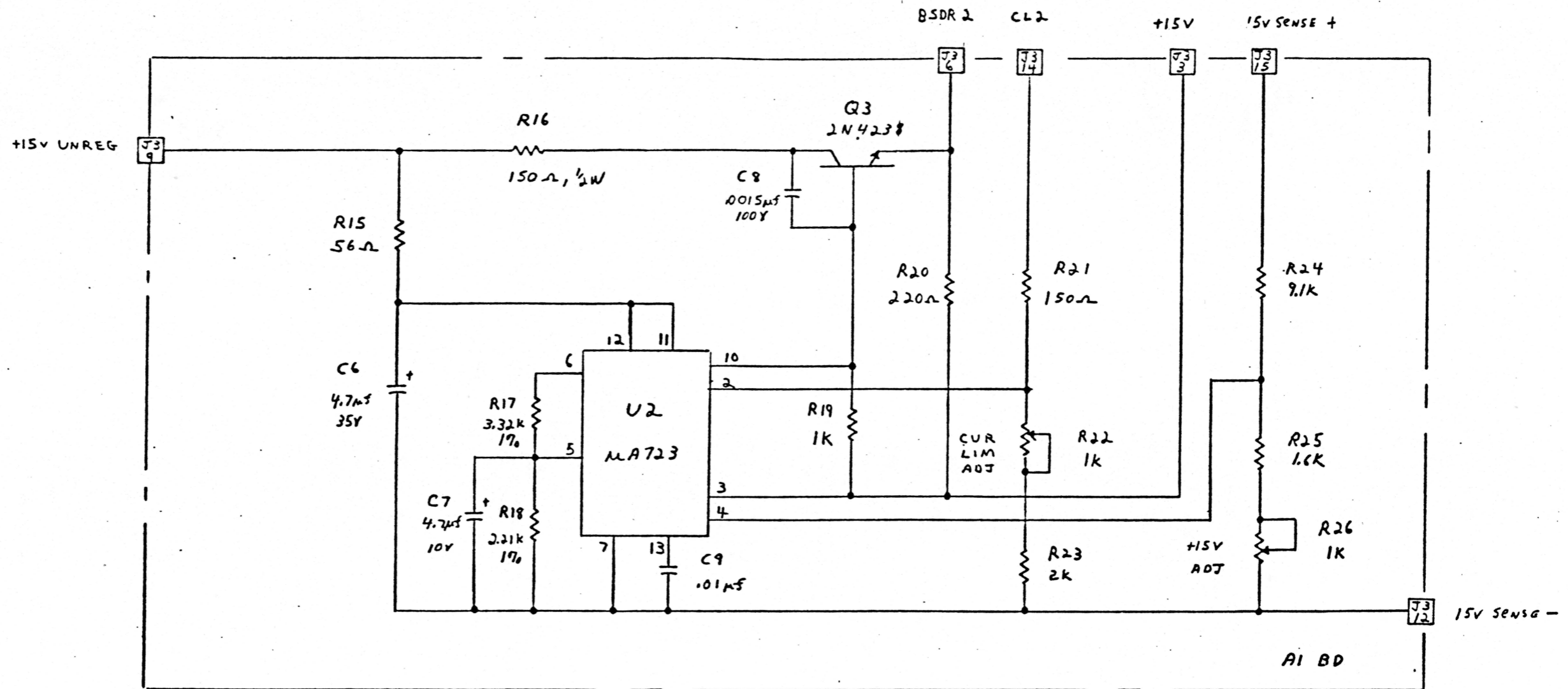
| | | | | | |
|---|---------|----------------------|----------|--|---------------|
| UNLESS OTHERWISE SPECIFIED DIMENSIONS ARE IN INCHES TOLERANCES ARE: FRACTIONS DECIMALS ANGLES ±.030 .XX ±.020 ±1.0° .XXX ±.010 | | CONTRACT NO. | | MAGNETIC POWER TECHNOLOGY INC. SCHEMATIC POWER SUPPLY +15VDC REGULATOR | |
| MATERIAL | | APPROVALS | DATE | | |
| FINISH | | DRAWN <i>WOCSS</i> | 12-12-77 | SIZE | REV. |
| NEXT ASSY | USED ON | CHECKED | | C | MPT 01602 |
| APPLICATION | | DO NOT SCALE DRAWING | | SCALE | SHEET 3 OF 44 |

| REVISIONS | | | | |
|-----------|-----|-------------|------|----------|
| ZONE | LTR | DESCRIPTION | DATE | APPROVED |
| | | SEE SHEET 1 | | |



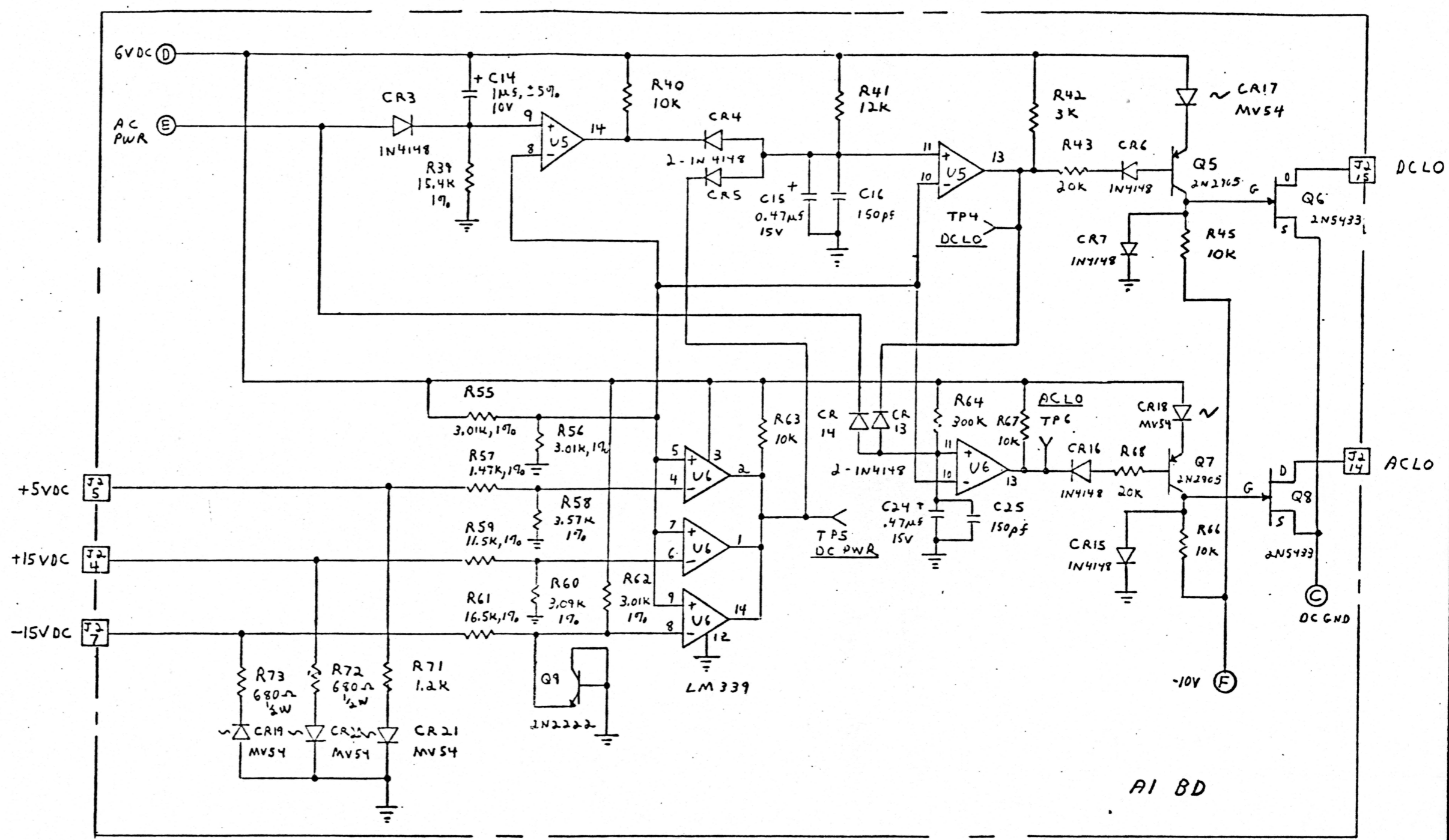
| | | | | | |
|--|---------|----------------------|----------|---|--------------------------|
| UNLESS OTHERWISE SPECIFIED DIMENSIONS ARE IN INCHES TOLERANCES ARE: FRACTIONS DECIMALS ANGLES ±.030 .XX ±.020 ±1.0° XXX ±.010 | | CONTRACT NO. | | MAGNETIC POWER TECHNOLOGY INC. | |
| MATERIAL | | APPROVALS | DATE | SCHEMATIC POWER SUPPLY -15 VDC REGULATOR | |
| FINISH | | DRAWN <i>KHOECS</i> | 12-12-77 | SIZE C | CODE IDENT NO. MPT 01602 |
| NEXT ASSY | USED ON | CHECKED | | SCALE 100058 | SHEET 4 OF 4 |
| APPLICATION | | DO NOT SCALE DRAWING | | | |

| REVISIONS | | | | |
|-----------|-----|-------------|------|----------|
| ZONE | LTR | DESCRIPTION | DATE | APPROVED |
| | | | | |



| | | | | | |
|---|--|----------------------|--|--------------------------------|--|
| UNLESS OTHERWISE SPECIFIED DIMENSIONS ARE IN INCHES TOLERANCES ARE: FRACTIONS DECIMALS ANGLES ±.030 .XX ±.020 ±1.0° .XXX ±.010 | | CONTRACT NO. | | MAGNETIC POWER TECHNOLOGY INC. | |
| MATERIAL | | APPROVALS | | DATE | |
| FINISH | | DRAWN <i>JDC</i> | | 9-8-78 | |
| NEXT ASSY | | CHECKED | | REGULATOR AND LOGIC B.D. | |
| USED ON | | | | +15V REG. SCHEMATIC | |
| APPLICATION | | DO NOT SCALE DRAWING | | DRAWING NO. MPT 01610 | |
| | | | | SIZE C | |
| | | | | CODE IDENT NO. | |
| | | | | DRAWING NO. | |
| | | | | REV. | |
| | | | | SCALE 100058 | |
| | | | | SHEET 2 OF 5 | |

| REVISIONS | | | | |
|-----------|-----|-------------|------|----------|
| ZONE | LTR | DESCRIPTION | DATE | APPROVED |
| | | | | |



AI BD

| | | | | | |
|---|--|----------------------|------|--------------------------------|---------------------------------|
| UNLESS OTHERWISE SPECIFIED DIMENSIONS ARE IN INCHES TOLERANCES ARE: FRACTIONS DECIMALS ANGLES ±.030 .XX ±.020 ±1.0° .XXX ±.010 | | CONTRACT NO. | | MAGNETIC POWER TECHNOLOGY INC. | |
| MATERIAL | | APPROVALS | DATE | REGULATOR AND LOGIC BD | |
| FINISH | | CHECKED | | ACLO AND DCLO SCHEMATIC | |
| NEXT ASSY USED ON APPLICATION | | DO NOT SCALE DRAWING | | SIZE | CODE IDENT NO. DRAWING NO. REV. |
| | | | | C | MPT 01610 A |
| | | | | SCALE | 100058 SHEET 5 OF 5 |